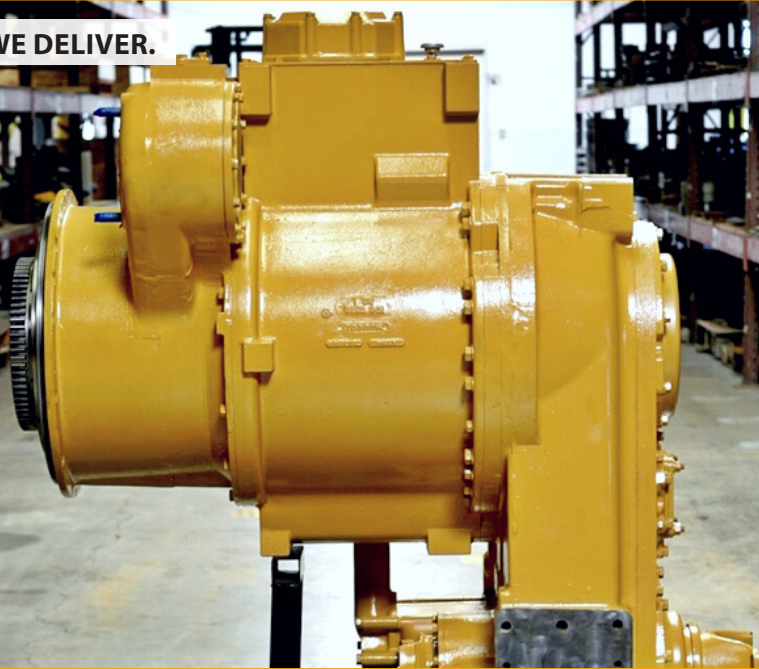


YOU DEMAND QUALITY AND WE DELIVER.



TRANSMISSIONS

Why Choose **H&R Certified Rebuilt Transmissions?**

You get the **reliability, durability, and performance** you demand from a premium part. With our **solid one-year warranty**, your risk is virtually eliminated.

• The Process

We have a **proven rebuild process** that ensures every part of the transmission is inspected and passes our quality control standards. If it does not meet OEM reusability specifications, it is replaced.

• Disassembly

We disassemble the entire transmission down to the nuts and bolts, clean and prepare the parts for inspection.

• Inspection/Evaluation

We inspect every part of the component and test parts when able, removing those that do not meet OEM reusability guidelines.

• Replacement Parts

We use the **highest quality replacement parts** available for all H&R Certified Rebuilt Transmissions, guaranteeing that the final product meets our strict standards.

• Transmission Reassembly

Our **highly-skilled technicians** have the tools and training to make sure that every transmission is properly reassembled.

• Officially Certified Rebuilt

Once the transmission passes all tests and inspections, it is marked as **H&R Certified Rebuilt**.

• Warranty

We place a **solid one-year warranty** on our H&R Certified Rebuilt transmissions, ensuring our commitment to you well after your purchase.

ABOUT H&R

Locations to Serve You

We have the ability to get your products where you need them, fast and at a reduced cost.

Knowledge

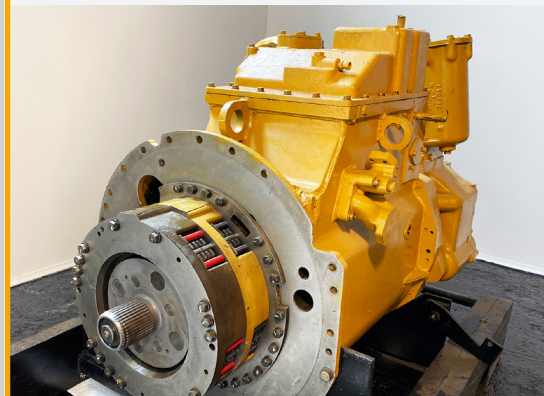
We have the knowledge and experience needed to rebuild our transmissions to meet or exceed all OEM reusability guidelines. Our rebuild specialists work hard to provide the quality and reliable component you require.

Massive Inventory

We have a large selection of transmissions for Caterpillar, Komatsu, John Deere, Volvo, Terex, Dresser, and other manufacturers available now.

Parts Specialists

Highly-trained Parts Specialists here to help work with you in supplying the parts you need to get you back up and running fast.



CONTACT ONE OF OUR **KNOWLEDGEABLE PART SPECIALISTS** TODAY!